

## Optima Plus



*Automation in Electronic Assembly*

## Optima Plus

*Optima Plus is a customized productivity solution. Effectively integrate Universal's productivity enablers to minimize cost, while maximizing throughput, yield, and profit*



# Optima Plus Line Solutions

*Optima Plus provides numerous benefits to help you achieve your production goals*

- Single Point of Responsibility and Contact
- Project Management by Universal
- Programming, Optimizing, Scheduling, and Monitoring Software
- “No Surprises” Ownership Experience
- Customized Support Packages
- Extended Warranty Options
- Throughput Security
- Best-in-Class Equipment
- Flexible Financing



OPTIMA *plus*



# Evaluating Your Needs

*We will assess your individual requirements to ensure an optimized solution for your manufacturing environment*

## Evaluations

- **Support Requirements**
  - Start-up Support
  - Production Support
  - Maintenance
- **Technology Support**
  - Implementation of new technologies
  - Process improvements
- **Software**
  - Data management
  - Monitoring and planning
- **Equipment**
  - Capacity requirements
  - Quality requirements
  - Flexibility requirements



## Target Initiatives

- **Maximize utilization**
- **Maximize process efficiency**
- **Maximize quality**
- **Maximize overall productivity**
- ***Maximize profits***

# Productivity Enablers

*Technology Expertise*



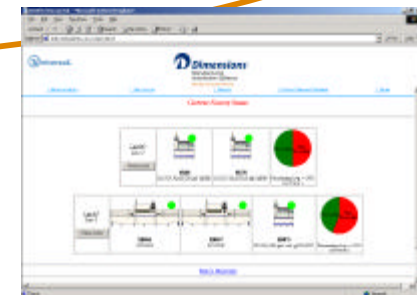
*Best-in-Class Equipment*



*World-Class Support*



*Manufacturing Automation Software*



## Optima is... *Best-in-Class Equipment*



Screen Printing

**DEK Screen Printers**

Material Dispensing

**GSM® Platforms**

Pick and Place

**GSM® Platforms**

**Chipshooters**

Semiconductor Assembly

**GSMx™ and GSMxs™ Platforms**

Turnkey Systems

Through Hole Equipment

**Axial, Radial, Special Machines**

Odd Form / Light Mechanical Assembly

**GSM® Platforms**

**Polaris™ Assembly Cells**

Curing and Reflow

**Vitronics Soltec Ovens**

Board Handling

**Elevators, conveyors, accumulators, workstations, shuttles, gates, lift/turn modules, and buffers**

AOI

Process Products

**Dimensions Manufacturing Automation Software**

## Plus is... *Manufacturing Automation Software*

### Dimensions Software Modules

- Manufacturing Monitoring, Reporting and Traceability
- Line Programming and Optimization
- Equipment Interface (Planned)
- Database Management
- Scheduling and Planning (Planned)
- Logistic Module



### Your Benefits

- Feeder, machine and line performance data collection / reporting
- Barcode Validation and Barcode Product Changeover information
- Common Windows® NT user interfaces across Universal surface mount machines
- Calculate feeder running low and list of feeders required for changeover
- Locate all feeders and reels on the production floor
- Quality management of feeders maintenance schedule
- CAD data import and offline programming
- Offline product optimization, simulation and balancing for GSM and HSP

## Plus is... *Technology Expertise*

### Advanced Process/SMT Lab - Binghamton, USA

- Over 15 years of industry-leading process knowledge, emerging technology implementation and failure analysis

### Technology Excellence Center - Suzhou, China

- World class lab, application engineering and productivity support for the fastest growing geographic market

### Singapore Institute of Manufacturing Technology

- Technology collaboration, Singapore Advanced SMT lab, process support and training center for Asia Technology support partnerships

### Technology partnership with Hereaus Germany for process support and training



### Your Benefits

- Implementation of new technologies
- Technology Consortia
- Turnkey solutions
- Technology leadership
- Global

## Plus is... *World-Class Support*

### Business/Process Support

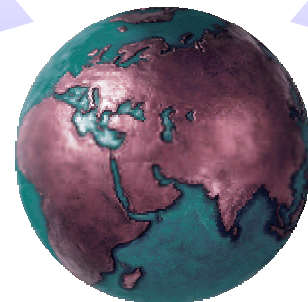
- Tailored training on/off-site
- Site audit / benchmark studies
- Process Engineering support
- Support customer high risk projects

### Field Engineering Support

- 250 Field Engineers; 32 countries
- Retrofits and upgrades
- Application Engineering
- Direct to every customer site
- 2hr-4hr-24hr response

### Account Management/Partnership

- Seminars, Technology Days, Roadmaps
- User Groups
- Quarterly relationship reports



### User Technical Support

- Call center 24/7
- Support @ uic.com
- Web-accessible knowledge base
- Remote Diagnostics and software download via Web

### Corrective Action

- Customer Situation Database

### Training

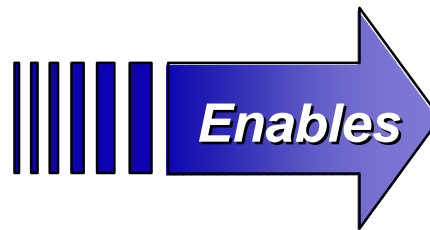
- On-site, off-site training
- Multi-language (English, Spanish, German, French, Mandarin... )
- On-line training tools

### Spare Parts Support

- 32 Warehouse locations worldwide
- On-site, web enabled stock management
- 2hr-4hr-24hr response

## Plus is... *Winning*

*The Optima Plus solution will reduce the risks associated with producing the best product at the lowest cost in the quickest time*



*Business Growth*

